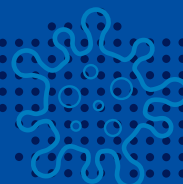
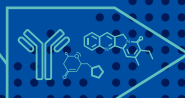
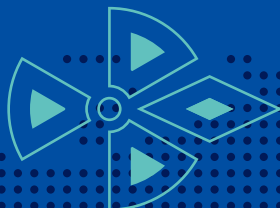


RDC Drugs CDMO Service

Porton has a professional technology platform and an experienced team to provide global clients with CMC solutions for radiopharmaceutical precursors and cold drugs. We are committed to becoming the leading RDC CDMO company in China.



Radionuclide

- | | |
|----------------------------|---------------------|
| Imaging: | Therapeutic: |
| • ^{18}F | • ^{177}Lu |
| • ^{68}Ga | • ^{64}Cu |
| • ^{123}I | • ^{225}Ac |
| • $^{99\text{m}}\text{Tc}$ | • ^{211}At |



Chelator

- DOTA
- DTPA
- NOTA
- TETA
- DFO



Linker (non-cleavable)

- Cys (-SH): S-S, Maleimide Group (mc, mcc, etc.)
- Lys (-NH₂): Activated Acid(CO-OSu, etc.)
- Click Chemistry



Targeting Molecule

- Antibody
- Peptide
- Small Molecule



Early Stage
Development Services



Process Development
and DS Manufacturing



Formulation
Development and DP
Manufacturing



Analytical
Development and QC



Registration Services

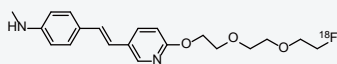


From IND to NDA, Porton has extensive experience in the development services for radiopharmaceutical precursors and cold drugs.

Small Molecule RDC

Internationally advanced dispensing equipment and extensive experience in solid automatic dispensing.

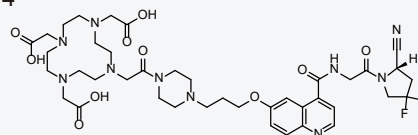
Florbetapir F18



Liquid-phase Synthetic Macromolecule RDC

Lyophilization and dispensing capabilities, enabling micro-dispensing in the range of 100ug to 10mg.

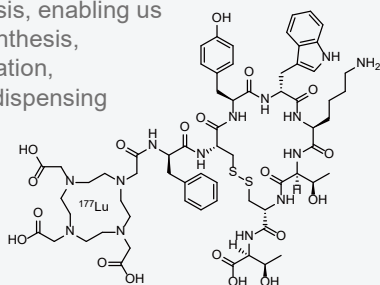
FAPI-4



Solid-phase Synthetic Macromolecule RDC

Extensive experience in solid-phase synthesis, enabling us to achieve quick synthesis, preparation, purification, lyophilization, and dispensing delivery processes.

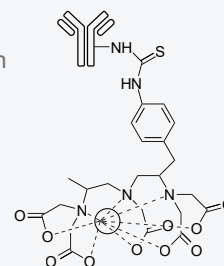
Lutathera



Biological Macromolecule RDC

One-stop protein and conjugated drug platform providing reliable bioconjugation services.

Zevalin



RDC Case List (Partial)

Case	Type	Stage	Project Profile	Radionuclide
A	Solid-phase Synthetic Macromolecule RDC	IND	30 g toxicology batch, 50 g clinical batch	Cu-labelled Precursor
B	Biological Macromolecule RDC	IND	40 g toxicology batch, 40 g clinical batch	Ga-labelled Precursor
C	Liquid-phase Synthetic Macromolecule RDC	IND	100 g toxicology batch, 100 g clinical batch	Ac-labelled Precursor
D	Solid-phase Synthetic Macromolecule RDC	IND+NDA	IND: 50 g pilot batch, 100 g clinical batch NDA: 100 g pre-PV batch, 100 g PV batch*3	Lu-labelled Precursor
E	Liquid-phase Synthetic Macromolecule RDC	NDA	100 g pre-PV batch, 100 g PV batch*3	Lu-labelled Precursor
F	Solid-phase Synthetic Macromolecule RDC	NDA	100 g pre-PV batch, 100 g PV batch*3	Lu-labelled Precursor
G	Solid-phase Synthetic Macromolecule RDC	NDA	100 g pre-PV batch, 100 g PV batch*3	Ga-labelled Precursor
H	Liquid-phase Synthetic Macromolecule RDC	NDA	100 g pre-PV batch, 100 g PV batch*3	Tc-labelled Precursor
I	Small Molecule RDC	DS+DP NDA	100 g pre-PV batch, 100 g PV batch*3	F-labelled Precursor